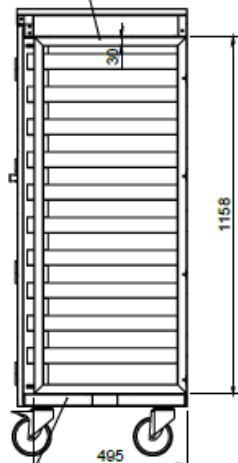


CABINET ON CASTORS WITH HINGED DOORS, PERFORATED TOP, BOTTOM AND DOORS FOR AIR PASSAGE, VERTICAL DIVIDER AND 10+10 SHELVES 350X500X100Hmm, PERFORATED AND WELDED TO THE STRUCTURE. HANDLE ON THE RIGHT SIDE, DIM. 850X550X1400Hmm

Made of AISI 304 Ni-Cr 18/10 stainless steel with Scotch Brite finish. Hinged doors mounted on hygienic hinges removable without the use of mechanical tools, with magnet closure, complete with bottom and top perforations for air passage as well as bottom and top. Vertical divider identifying two compartments, 10 shelves each, 350x500x100Hmm, with perforated bottom, welded to the structure. Equipped with stainless steel round tube handle Ø20mm welded on the right side. On 4 swivel castors Ø125mm, with stainless steel support, 2 with brake.



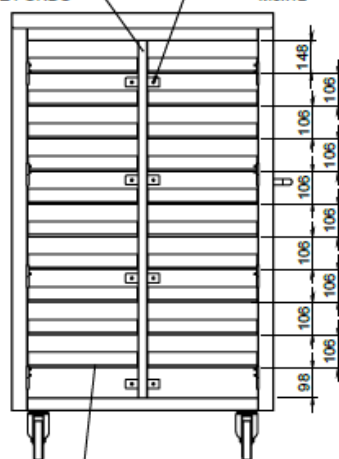
TELAIO DIVISORIO
INTERNO IN TUBO
30x30



SEZIONE A-A

FONDO ARMADIO
FORELINATO CON
PASSO COME CIELO

TELAIO CENTRALE
FISSATO CON INSERTI
M6 A CIELO E FONDO

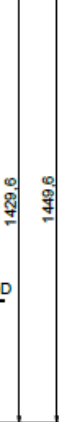


MONTARE n° 8
PRIGIONIERI
M5x12

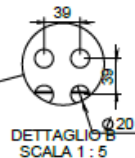
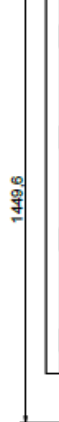
MANIGLIA
DI SPINTA

Ø 125

550

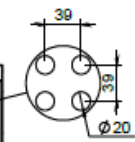
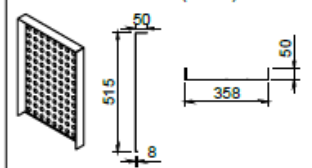


850

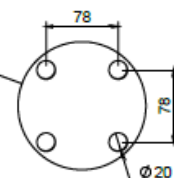
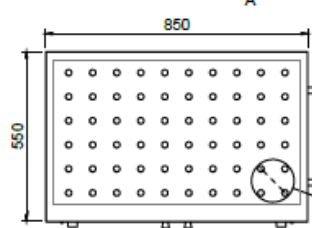


DETTAGLIO B
SCALA 1 : 5

CASSETTE SALDATE (10+10)



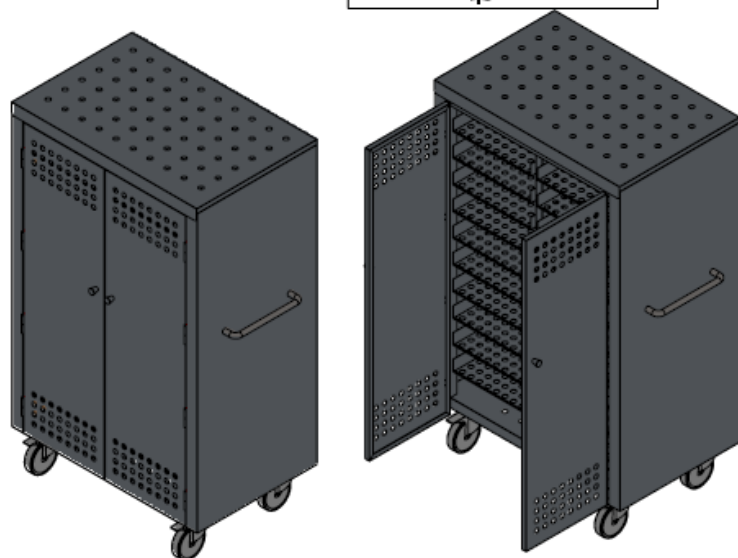
DETTAGLIO E
SCALA 1 : 5



DETTAGLIO C
SCALA 1 : 5

SEZIONE D-D

ARMADIO INOX AISI 304 SU RUOTE CON CIELO A BATTENTI. CIELO, FONDO ED ANTE FORATI PER PASSAGGIO DELL'ARIA. DIVISORIO VERTICALE E 10+10 CASSETTE MM 350X500X100H FORATE E SALDATE ALLA STRUTTURA. BARRA DI SPINTA SUL LATO DX. DIM. 850X550X1400Hmm



Tolleranze generali dimensioni:	UNI ISO 2768-mk		Scala:	1:15	Peso:	128,971 kg
			Materiale:			
			Sviluppo:		x x	
			Cliente:		Trattamento:	

4

Serie:	Codice articolo:	Codice cliente:
Descrizione:	Rev.	TS18000983-000B